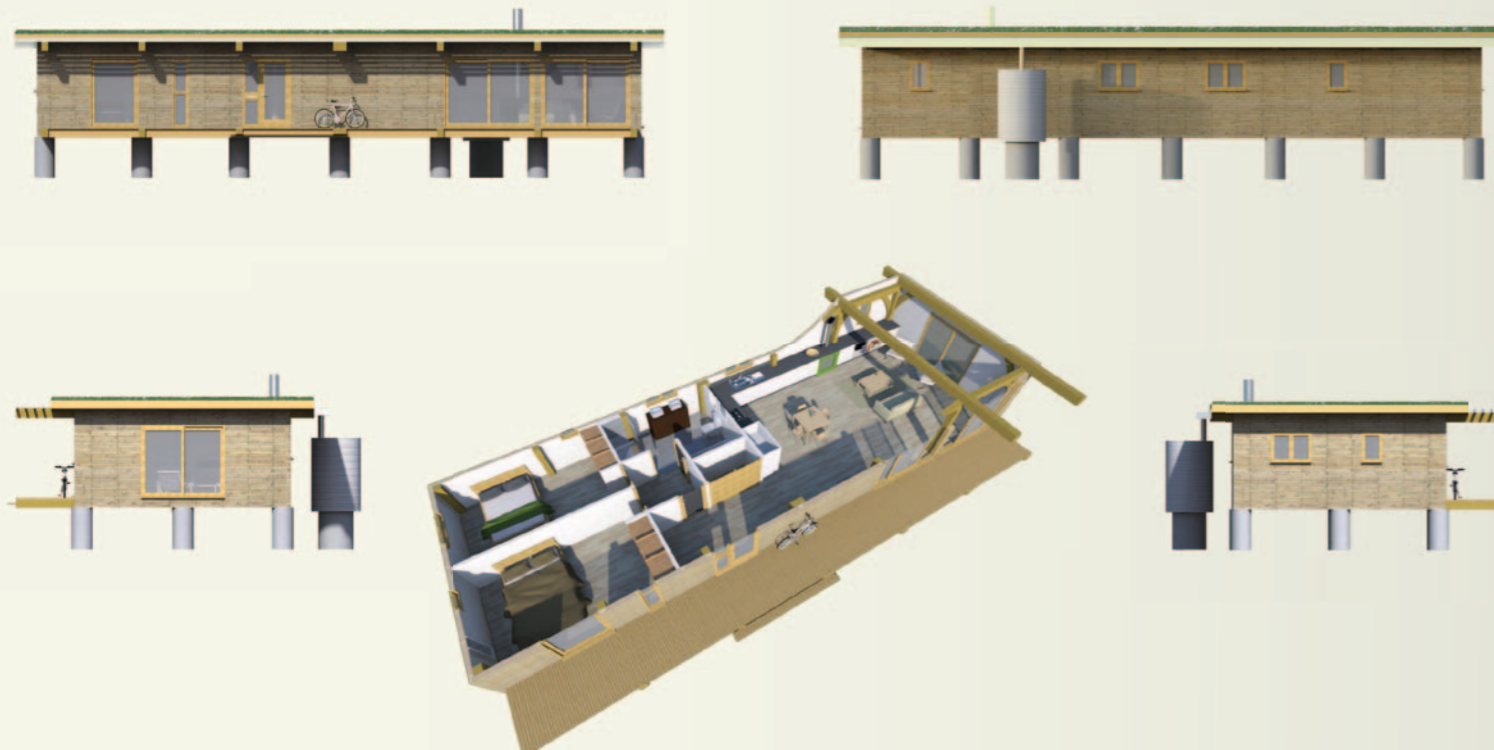
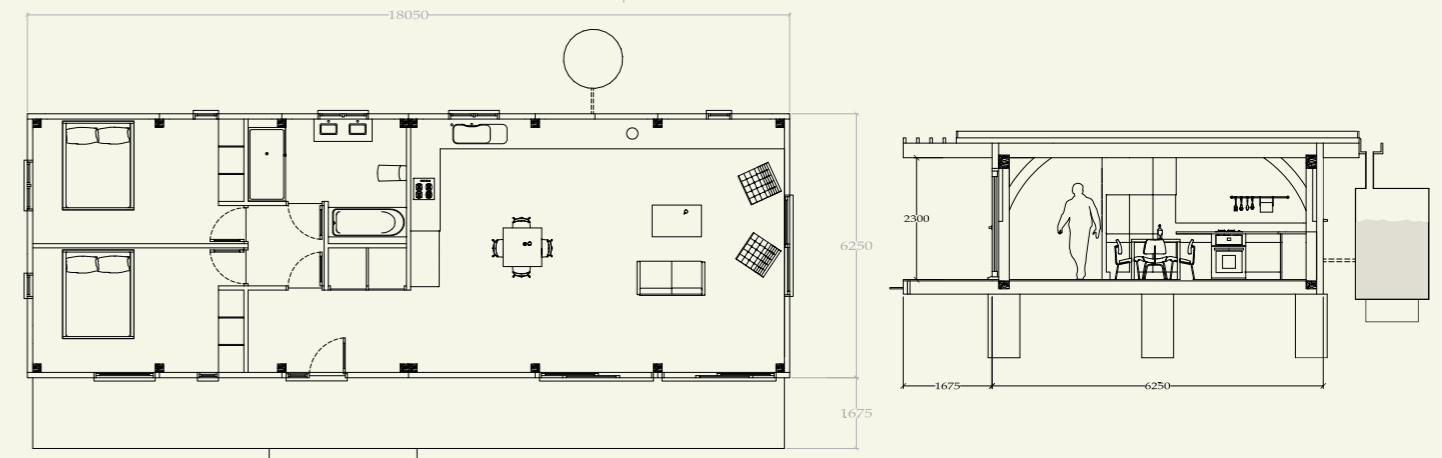


Eco Cabin



The Westwind Eco Cabin was initially designed on behalf of a client who wanted a replacement for a caravan on her land. Because of the careful sizing and modular nature of the design the need for planning permission was bypassed as were subsequent building regulations.

The Eco Cabin can provide a quick, permanent, and affordable eco-home or office, the example shown offering 104m². The aim of the Cabin is to hit the market between the more lightweight, temporary structures available, and the permanent full builds whilst holding on to the benefits of both, creating inexpensive yet high quality accommodation.

The structural oak frame of the Cabin is enclosed in 175mm SIPs panels offering an approximate u-value of 0.14 W/mk, and a sedum roof draining into a rain-harvesting system helping produce more than 50% of the required water for flushing, washing machines or outside use.

Taking full advantage of the air tight nature of modern SIP panels, surrounding materials, and technology, the Eco Cabin uses mechanical ventilation and heat recovery technology to offer an efficient and sustainable solution to maintaining comfortable internal temperatures.

If needed the Eco Cabin could be made fully 'off-grid' by using solar thermal and photo-voltaic cells and a composting toilet.

Approximate finished price - £100,000.00*

If you are interesting in progressing further with an Eco Cabin, please call or email us to set up a meeting with our designers and our architect.

*depending on site conditions

